

Tapo Smart Remote Dimmer Switch

Tapo S200D



Smart Lighting Control



Tap to Turn On/Off



Rotate to Dim

Tapo Hub Required



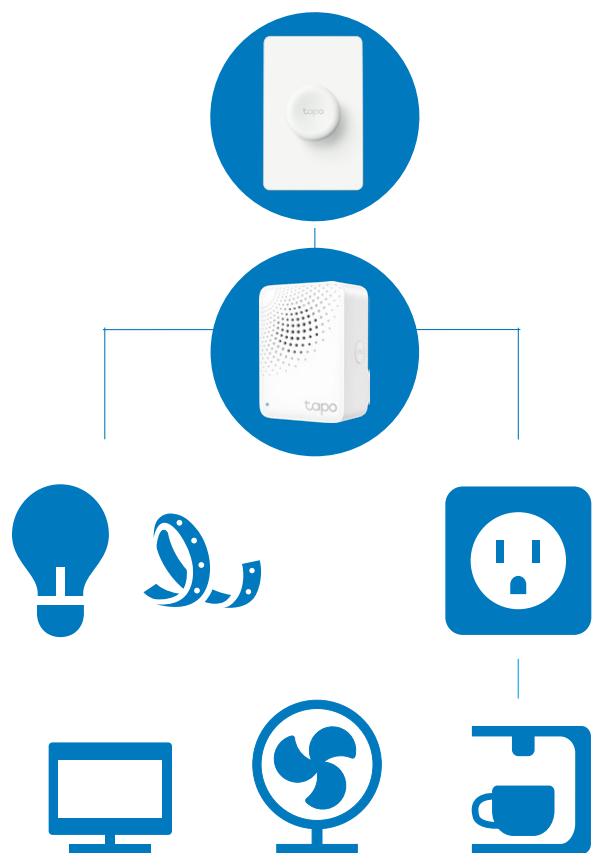
// Tapo Smart Ecosystem

Tapo is the easy way to turn your home into a smart home. With the Tapo Hub as a bridge, Tapo Smart Dimmer Switch works with a wide range of Tapo accessories. So you can easily control and monitor your home from anywhere.



// Control Your Smart Devices with Tapo Dimmer Switch

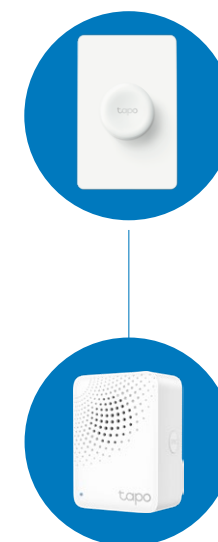
Turn On/Off Devices



Customize Tapo Lighting



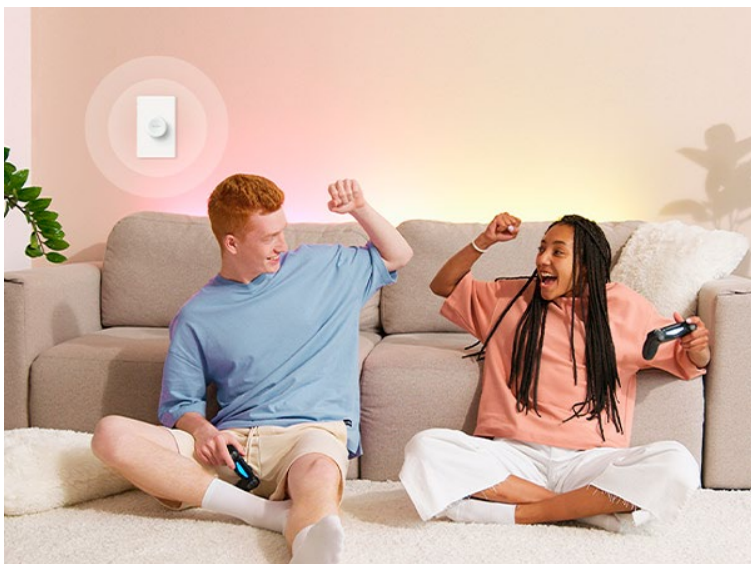
Build Smart Doorbell



// Highlights

Smart Control at Your Fingertips

Tapo S200D adds local instant control to your smart lights, simplifying how you control home illumination. Don't bother opening up an app.



Multi-Location Dimming

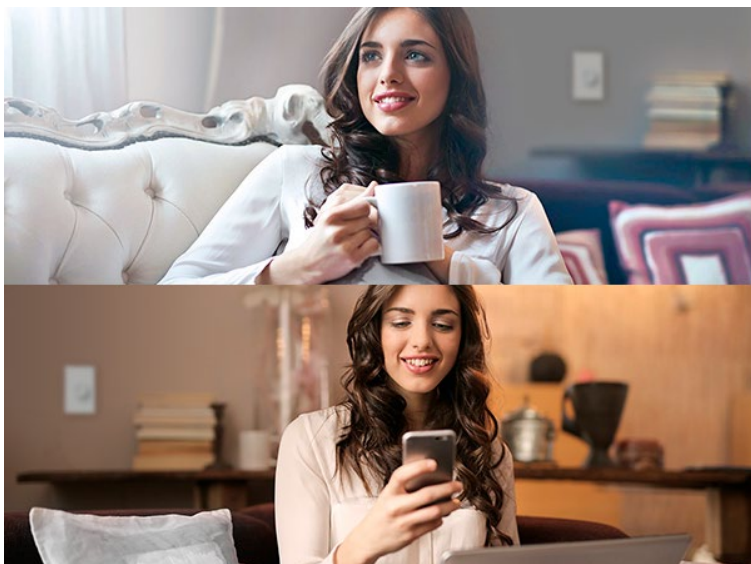
Control your smart light from multiple locations with more than one dimmer switch. Ideal for living rooms, halls, and stairways.



// Highlights

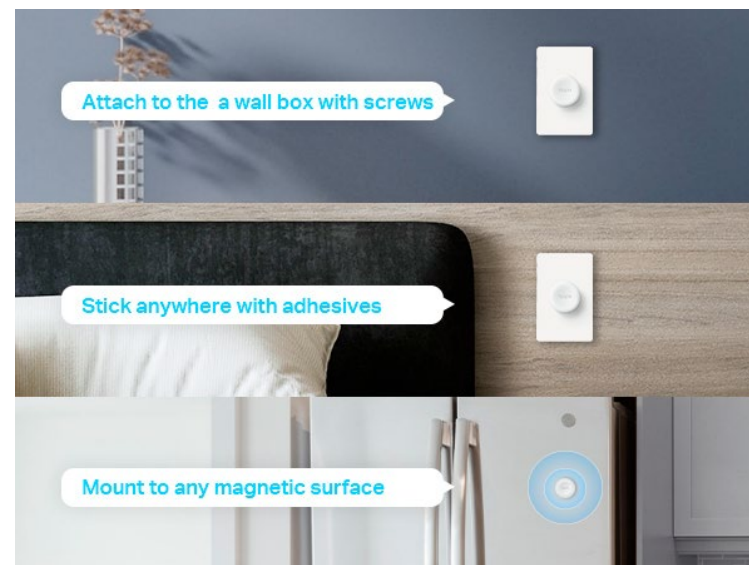
Personalized Lighting Scenes

Easily design scenarios for your daily routine or special activities by customizing brightness. Trigger a preset scene to control multiple lights in just one or two taps.



Flexible Mounting

Replace your old wall plate with the included screws, or stick the button anywhere with the provided adhesives. You can also attach the switch without a wall plate on any magnetic surface.



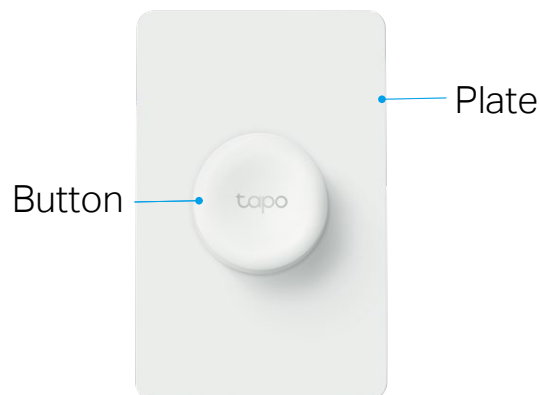
// Features

- **Multiple Ways to Control** – Tap, double tap, or rotate to control your home devices easily and smartly.
- **Smart Home Control** – Turn on/off and dim your Tapo smart lights, trigger a preset scene to control multiple lights in just one or two taps.
- **Real-Time Notifications** – Trigger Hub alarm and send you notifications via Tapo app whenever the button is triggered.
- **Work with Tapo Devices** – Trigger your home routines with smart actions.
- **Easy and Flexible Placement** – No wire needed. Mount it wherever you want to make smart control within reach.
- **Battery Powered** – Battery-powered design with 1+ year[#] battery life.
- **Device Sharing** – Easily share management permissions with each member of your family.
- **Easy Setup and Use** – Set up quickly and easily through the free Tapo app.

// Specifications

General

- Wireless: 922 MHz*
- Size:
Plate: 5.1x3.3x0.3 in. (128.8×84.8×7.6 mm)
Button: Φ 1.7x0.7 in. (Φ 43.5×16.9 mm)
- Mounting options: Freestanding, Wall mounting
- Notifications: Tapo Hub alarm, Tapo app notifications
- Battery Life: CR2032, 1 Year+[#]



Others

- Package Contents:
Smart Button
Wall Plate
Mounting Screws
Double-sided Tape
Location Labels
Quick Start Guide
- Certifications: FCC, IC, R-NZ, RoHS, RCM
- Operating Temperature: 0 °C– 40 °C (32°F–104°F)
- Operating Humidity: 10%–90%RH, Non-condensing

[#]Based on Tapo's laboratory results Actual battery life may vary depending on working conditions and environment.

*The specific working frequencies for US version are 920.9 MHz to 923.3 MHz.

Specifications are subject to change without notice. All brands and product names are trademarks or registered trademarks of their respective holders.

©2024 TP-Link